

ArchiveLink Migration Toolkit (AMT) for SAP®

Mass Migrate Archived Data and Documents

Why Archive Migration

Change is ubiquitous. A change in corporate IT infrastructure strategy, M&A activity, lack of functionality in your existing solution, or unacceptable service levels are just a few of the reasons that may force you to replace your existing ArchiveLink storage system. How to migrate the archived data and documents from the existing solution should always be taken into consideration when a new ArchiveLink storage solution is implemented. Without proper planning and a go forward strategy, custom migrations can turn into big projects that overshadow the benefits of the new solution. The result may be a long-term drain on your IT budget in terms cost and human resources.

Challenges

Since the SAP spool system does not handle archived documents and images, the only way to automate this kind of migration is to write complex custom ABAP or user-exits. These interact with the application server operating system level tools to perform some of the requisite tasks: reading from the existing archive system, writing to the new archive system, and deleting and recreating the link table entries in SAP. This is a manual operation. Even by going through this process, a mass archived document output operation may adversely impact SAP performance as ABAP driven content extractions from content server, subsequent conversion, merge, and output will heavily consume SAP system resources. In addition, your BASIS team may have reservations about installing components that interact with third-party tools installed at the operating system level to perform the required migration activities.

Solution

The ArchiveLink Migration Toolkit (AMT) is a unique Dolphin solution for planning, executing and managing migration of archived data and documents from one ArchiveLink-certified content repository to another, regardless of the software vendor. It is a pure SAP based ABAP application and supports any ArchiveLink certified repository.

In contrast to the manual process described earlier, the ArchiveLink Migration Toolkit is a turnkey solution that resides completely within SAP and requires no installation at the operating system level on either the SAP application server, existing archive server, or new archive server.

The AMT permits all documents to be previewed prior to being migrated and provides a volume analysis of all implemented ArchiveLink scenarios.

The migration is seamless and transparent to the user and can be scheduled, a big advantage. AMT has a built-in failsafe ensuring transactional integrity and automated reattempts in case of timeouts. In addition, the AMT...

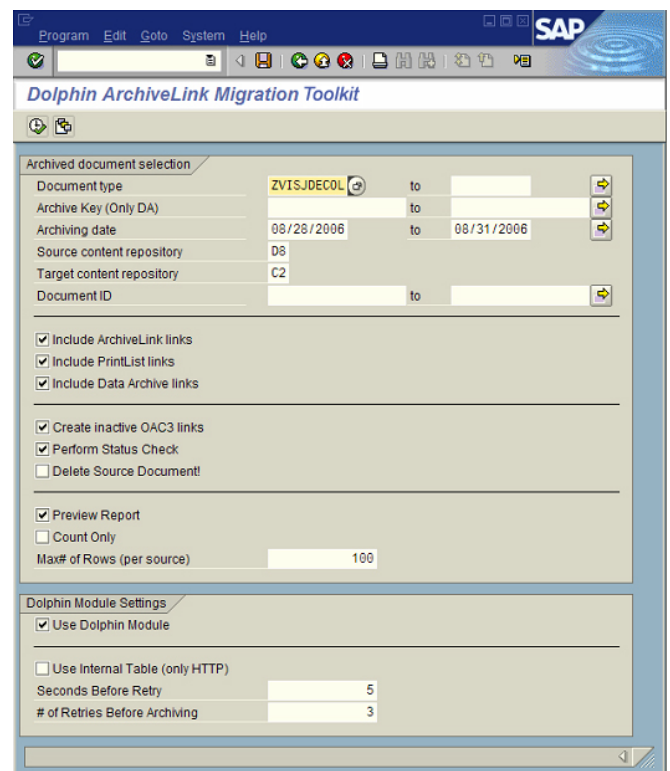
The screenshot shows the 'Dolphin ArchiveLink Migration Toolkit' selection screen within an SAP environment. The window title is 'Program Edit Goto System Help' and the SAP logo is visible in the top right. The main content area is titled 'Archived document selection' and contains several input fields and checkboxes. The 'Document type' is set to 'ZVISJDECOL'. The 'Archiving date' range is from '08/28/2006' to '08/31/2006'. The 'Source content repository' is 'D8' and the 'Target content repository' is 'C2'. There are checkboxes for 'Include ArchiveLink links', 'Include PrintList links', 'Include Data Archive links', 'Create inactive OAC3 links', 'Perform Status Check', and 'Delete Source Document!'. A 'Preview Report' checkbox is checked, and 'Count Only' is unchecked. The 'Max# of Rows (per source)' is set to '100'. Below this is the 'Dolphin Module Settings' section, which includes a checked 'Use Dolphin Module' checkbox, an unchecked 'Use Internal Table (only HTTP)' checkbox, 'Seconds Before Retry' set to '5', and '# of Retries Before Archiving' set to '3'. The SAP menu bar and standard toolbar are visible at the top.

Figure 1: Selection Screen

- Supports structured (Data Archiving, DART, Printlists) and unstructured (ArchiveLink documents, inbound/outbound) archived data migration
- Supports existing link/file information backup
- Supports both foreground and background migration
- Supports both RFC and HTTP protocols and any combination of these in the source or target repositories
- Supports the migration of pre-SAP R/3 4.5 ADK (data archiving file) links
- Supports space management of backup tables



Figure 3: Standard Buttons on the SAP Active List Viewer Toolbar

Source	Source Repository	Archive Date	Document Type	SAP Object	ObjectID/ReportID#	Status	Note	Ann.	Archive DocID
DA	DB	01/23/2004	REORG		000994-001FL_DOCUMENT	ONLINE	N	N	7B7403C0A2F5694900
DA	DB	10/20/2004	REORG		000919-001SD_VBAK	ONLINE	N	N	D13E49E9B4867E4F9C
DA	DB	10/20/2004	REORG		000919-002SD_VBAK	ONLINE	N	N	BE11F3565C8EB349A3
DA	DB	08/22/2005	REORG		001112-001ARCHIVELNK	ONLINE	N	N	EFD304B9F02AF941BB

Figure 2: Output List

once the initial setup and first batch migration are deemed successful.

Dolphin is available for support to help resolve runtime issues. At the end of the migration, we assist with verification of the completeness and quality of the migration.

About Dolphin

Dolphin makes crucial business operations like data management, data archiving, accounts payable, accounts receivable and order management run better and smarter for organizations using SAP solutions. Focused on improving business performance through Information Lifecycle Management and Business Process Management, Dolphin produces the right solution for each customer, faster, through its unmatched experience in SAP technologies, and its proven best practices, tools and SAP add-on applications. Dolphin solutions improve business and IT performance, lower total cost of ownership and deliver high return on investment.

The company was founded in 1995 and has offices in Philadelphia, PA and San Jose, CA.

Visit us online at www.dolphin-corp.com to learn more!

Dolphin
www.dolphin-corp.com
 1 (888) 305-9033
contact@dolphin-corp.com

Implementation

By A typical implementation of the AMT begins with a requirements-gathering workshop to analyze the current and new ArchiveLink systems and scenarios. AMT is used to assist with the analysis and can be transported before the workshop is completed. Based on the data gathered during the workshop, a situation-specific migration plan is developed. Dolphin can either perform the entire migration or provide a knowledge transfer if there are internal resources that will complete the actual migration

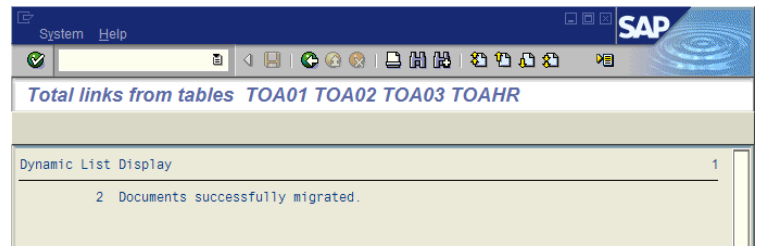


Figure 4 - Report Output

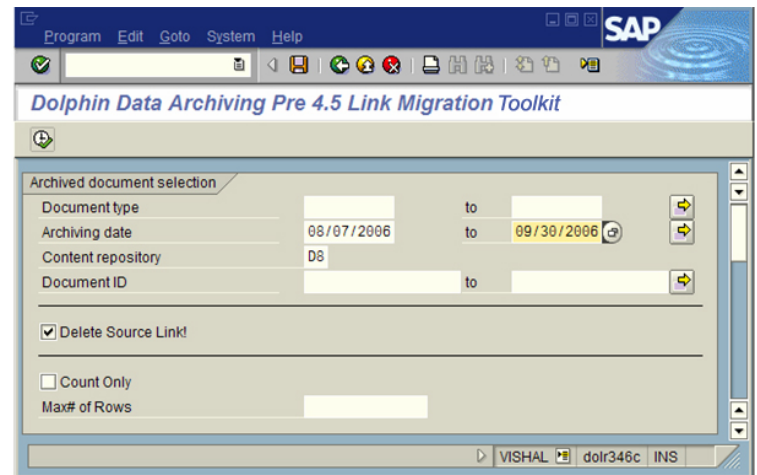


Figure 5 - ZDOLPDALNKMIG Report Selection Screen



Smart Adaptable Proven™

Dolphin, 1487 Dunwoody Drive, Suite 350, West Chester, PA 19380
 Phone: 1-888-305-9033

www.dolphin-corp.com • Email: contact@dolphin-corp.com

